



MOTOR TRIKE[®]
I N C O R P O R A T E D



**GLADIATOR & GTX-1200
OWNER'S MANUAL**

**Motor Trike, Inc.
P.O. Box 611
22667 FM 15
Troup, Texas 75789-0611
(800) 90-TRIKE**

TABLE OF CONTENTS

INTRODUCTION	3
SAFELY OPERATING YOUR TRIKE.....	3
CAPACITY LIMITS	4
SPECIFICATIONS.....	5
AIR SUSPENSION OPERATION.....	6
TRUNK OPERATION	7
PARKING.....	7
AVAILABLE ACCESSORIES & OPTIONS	8
RECEIVER HITCH & DRAW BAR (IF EQUIPPED).....	8
ELECTRIC REVERSE (IF EQUIPPED)	9
MAINTENANCE	11
WARRANTY	14
THANK YOU.....	14

INTRODUCTION

Congratulations on acquiring your new Motor Trike conversion. Please take the necessary time to become familiar with your vehicle by reading this owner's manual. The more you know and understand about your particular unit the safer and more enjoyable your riding experience will be.

This manual is a supplement to the motorcycle owner's manual, not a replacement for it. Follow all procedures required and recommended by the motorcycle owner's manual.

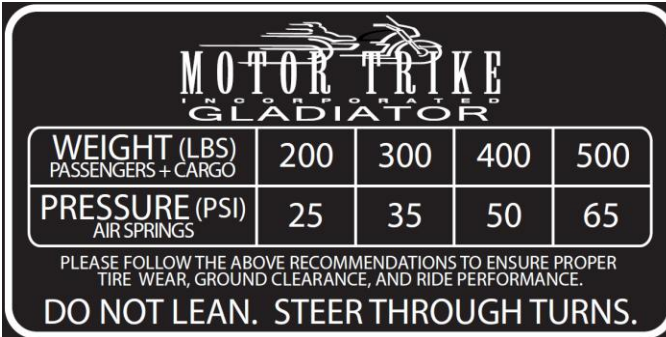
For more information on Motor Trike, Inc. and the products we offer please visit our website.

WWW.MOTORTRIKE.COM

SAFELY OPERATING YOUR TRIKE

Motor Trike is committed to offering safe vehicle platforms which accommodate user friendly operation; however, it is necessary for the user to take precautions and follow safety guidelines while operating the vehicle. In order to safely operate your trike, please carefully follow these guidelines as well as the general guidelines for motorcycle operation which can be found in the original motorcycle manual:

- Only operate the vehicle if you have the proper licensing in your state. Most states require a motorcycle license or a trike license to operate a three-wheeled vehicle.
- Always wear a helmet and appropriate safety gear while operating/riding this vehicle.
- Become familiar with the vehicle's controls before operating the vehicle, using the motorcycle's owner's manual as a reference.
- Follow all traffic laws while operating the vehicle.
- Notice the sticker located on your unit's fuel tank and/or trunk door inner skin: **DO NOT LEAN. STEER THROUGH TURNS.** Unlike a motorcycle, a trike has to be steered through the turns. Refer to Figure 1.



The sticker is rectangular with rounded corners and a black background with white text. At the top, it features the Motor Trike logo (a stylized motorcycle) and the text 'MOTOR TRIKE' in a large, bold, serif font, with 'GLADIATOR' in a smaller font below it. Below the logo is a table with two rows and four columns. The first row is labeled 'WEIGHT (LBS) PASSENGERS + CARGO' and the second row is labeled 'PRESSURE (PSI) AIR SPRINGS'. The columns correspond to weight/cargo values of 200, 300, 400, and 500, and pressure values of 25, 35, 50, and 65. Below the table, there is a line of text: 'PLEASE FOLLOW THE ABOVE RECOMMENDATIONS TO ENSURE PROPER TIRE WEAR, GROUND CLEARANCE, AND RIDE PERFORMANCE.' At the bottom of the sticker, the text 'DO NOT LEAN. STEER THROUGH TURNS.' is written in a large, bold, sans-serif font.

WEIGHT (LBS) PASSENGERS + CARGO	200	300	400	500
PRESSURE (PSI) AIR SPRINGS	25	35	50	65

PLEASE FOLLOW THE ABOVE RECOMMENDATIONS TO ENSURE PROPER
TIRE WEAR, GROUND CLEARANCE, AND RIDE PERFORMANCE.

DO NOT LEAN. STEER THROUGH TURNS.

Figure 1: Vehicle Operation Warning Sticker (Gladiator Sticker Shown)

- Follow the maintenance schedule set forth by this owner’s manual and the original motorcycle owner’s manual in order to ensure the vehicle functions properly. The maintenance schedule can be found in the Maintenance/ Service section of each owner’s manual.
- Do not load the trike with passengers, cargo, accessories, etc. that will result in exceeding the recommended load capacity. This will ensure the vehicle is operating within its designed conditions.

CAPACITY LIMITS

In order to ensure safe operating conditions for your trike, it is imperative to follow the load limits and guidelines listed below in either Table 1 or Table 2. These guidelines and load limits are a combination of the motorcycle manufacturer’s recommended capacity limits, found in the original owner’s manual, and Motor Trike’s capacity limits. See Table 3.

Table 1: Gladiator Capacity Limits

CAPACITY	LIMIT	DESCRIPTION
MAXIMUM TOTAL WEIGHT CAPACITY	500 LBS	INCLUDES PASSENGERS, CARGO, ACCESSORIES, AND TRAILER TONGUE WEIGHT
MAXIMUM TOTAL CARGO CAPACITY	60 LBS	TOTAL CARGO CAPACITY OF THE TOURING AND TRIKE TRUNK
TOURING TRUNK CARGO CAPACITY	20 LBS	
TRIKE TRUNK CARGO CAPACITY	40 LBS	
MAXIMUM TRAILER TONGUE WEIGHT	100 LBS	
MAXIMUM TRAILER WEIGHT	400 LBS	EXCLUDED FROM THE MAXIMUM TOTAL WEIGHT CAPACITY

Table 2: GTX-1200 Capacity Limits

CAPACITY	LIMIT	DESCRIPTION
MAXIMUM TOTAL WEIGHT CAPACITY	420 LBS	INCLUDES PASSENGERS, CARGO, ACCESSORIES, AND TRAILER TONGUE WEIGHT
MAXIMUM TOTAL CARGO CAPACITY	40 LBS	TOTAL CARGO CAPACITY OF THE TRIKE TRUNK
MAXIMUM TRAILER TONGUE WEIGHT	100 LBS	
MAXIMUM TRAILER WEIGHT	400 LBS	EXCLUDED FROM THE MAXIMUM TOTAL WEIGHT CAPACITY

Table 3: Load Limits and Guidelines

YOUR TRIKE HAS BEEN DESIGNED TO CARRY ONE DRIVER AND ONE PASSENGER. DIFFERENCES IN ACCELERATION AND BRAKING MAY BE NOTICED WHEN RIDING WITH AND WITHOUT A PASSENGER, CARGO, OR TRAILER. AS LONG AS THESE ITEMS ARE WITHIN THE GIVEN LOAD LIMITS AND GUIDELINES, SAFE OPERATION OF THE TRIKE CAN STILL BE ACHIEVED.

PLEASE NOTE THAT EXCEEDING THE MAXIMUM WEIGHT CAPACITY OR IMPROPERLY LOADING YOUR TRIKE CAN SERIOUSLY IMPAIR THE TRIKE'S HANDLING, BRAKING, AND STABILITY. DISREGARDING THE LOAD LIMITS AND GUIDELINES OUTLINED ABOVE CAN LEAD TO A CRASH, SERIOUS INJURY, OR DEATH.

SPECIFICATIONS

The specifications shown in Table 4 and Table 5 are taken from a base model kit.

Table 4: Gladiator Specifications

OVERALL LENGTH*:	104"
WHEEL BASE*:	64"
OVERALL WIDTH:	55"
TRACK WIDTH:	43.5"
BASE WEIGHT:	1200 lbs
TIRE SIZE:	225/60/R15
WHEEL SIZE:	15" X 7" Bolt Pattern: 5 X 4.5"
MAX. LOAD CAPACITY:	500 lbs

*Measured with stock rake. 4° rake kit adds 3 inches to the overall length and wheel base

Table 5: GTX-1200 Specifications

OVERALL LENGTH:	101"
WHEEL BASE:	61"
OVERALL WIDTH:	55"
TRACK WIDTH	43.5"
BASE WEIGHT:	920 lbs
TIRE SIZE:	225/60/R15
WHEEL SIZE:	15"x7" Bolt Pattern: 5x4.5"
MAX. LOAD CAPACITY:	420 lbs

AIR SUSPENSION OPERATION

An on-board air compressor allows for on-the-fly air suspension pressure adjustment. The pressure is adjusted using the suspension control module mounted to the handle bars. To increase air spring pressure, press and hold the “UP” button until the desired pressure is reached. To reduce the pressure, press the “DOWN” button. **DO NOT OPERATE THE VEHICLE WITH LESS THAN 15 PSI OR MORE THAN 100 PSI IN THE AIR SPRINGS.** Figure 2 shows the suspension control module.



Figure 2: Suspension Control Module

In order to ensure proper tire wear, ground clearance, and handling characteristics please follow the guidelines listed on the sticker found on the interior of the trunk and/or top of gas tank. These guidelines are set in order to ensure the riders’ safety and comfort. The sticker is shown in Figure 3 below:

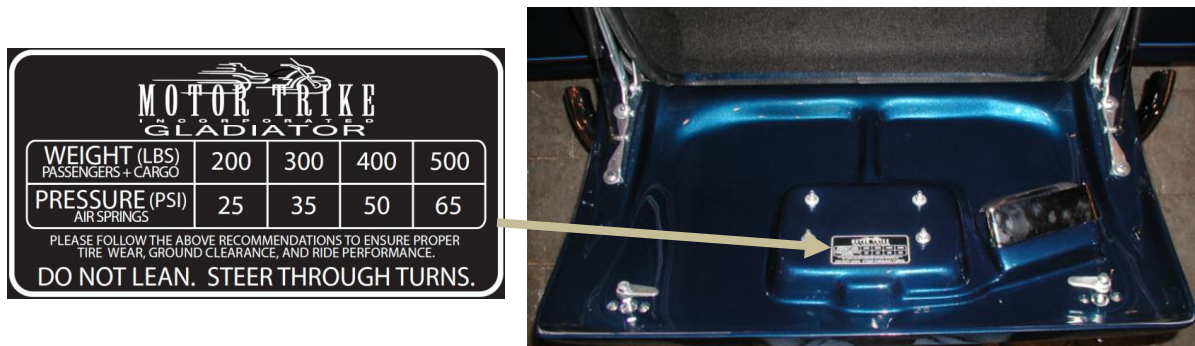


Figure 3: Air Spring Pressure Sticker Trunk Location

The suspension control module also displays the voltage of the 12v system. The acceptable range for your vehicle’s voltage is between 11V and 14V. If the displayed voltage is greater than 14 volts, contact your local Motor Trike dealer to have the electrical system inspected on your vehicle. If the

displayed voltage is below 11V despite how much you have ridden the bike, you may have a problem with the bikes charging system. Follow the recommended procedure for inspecting and charging the battery found in your owner's manual. If this does not resolve the issue, contact your local Motor Trike dealer for assistance.

TRUNK OPERATION

The trunk door is opened by rotating the t-handles on the trunk door to unlatch the trunk door. Refer to Figure 4.

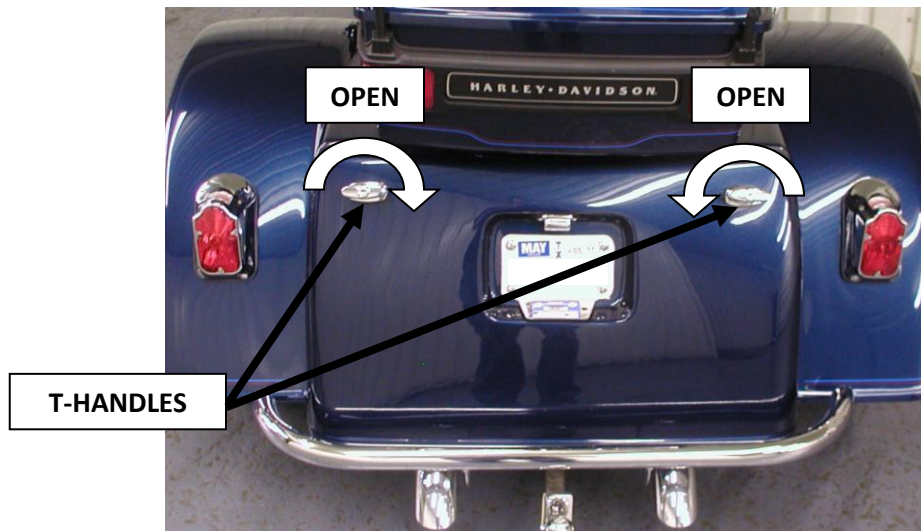


Figure 4: Opening Trunk (Shown with Optional Chrome Nerf Bumper)

- To close the trunk, place your hands on the t-handles, press the door shut, and rotate the t-handles in the reverse direction shown in Figure 4.
- Lock both t-handles with the keys provided with your trike. If you lose your keys please contact your local Motor Trike dealer to arrange replacements.

PARKING

When parking your trike, extra precaution needs to be taken in order to ensure the vehicle cannot roll away, which could cause vehicle damage or personal injury. Several recommended steps that will help to ensure the trike is securely parked include:

- Lock the steering lock.
- Leave the transmission in gear.
- Park on level ground.
- Apply parking brake if equipped.

AVAILABLE ACCESSORIES & OPTIONS

Motor Trike offers an extensive line of accessories in order to further customize your trike. The accessories can be ordered and installed through your local Motor Trike dealer or ordered directly through Motor Trike. See Table 6 for a list of our most popular accessories and options.

Table 6: Available Accessories and Options

ACCESSORIES/OPTIONS	DESCRIPTION
WIDE SELECTION OF WHEELS	CUSTOMIZE YOUR TRIKE WITH NEW REAR WHEELS OR ADD A MATCHING FRONT WHEEL.
FENDER BRAS PLAIN	PROTECT THE FRONT OF YOUR TRIKE FENDERS
FENDER BRAS EMBROIDERED	LOOK GOOD PROTECTING YOUR TRIKE FENDERS
TRUNK CARPET	GIVE YOUR TRUNK A FINISHED LOOK
EMBROIDERED TRUNK MAT	PROTECT YOUR TRUNK CARPET WITH STYLE
RAKE KIT*	REDUCE STEERING EFFORT AND RIDER FATIGUE
CHROME NERF BUMPER	CUSTOMIZE YOUR TRIKE WITH A CHROME BUMPER
LIGHT BAR	CUSTOMIZE YOUR TRIKE AND BE MORE VISIBLE
CENTRAMATICS	INCREASE FRONT TIRE LIFE WITH A SMOOTH FRONT END
TROG TRAX*	PROTECT YOUR FEET FROM THE ELEMENTS WITH STYLE
FOG LIGHTS FOR TROG TRAX*	SEE AND BE SEEN. ADD LIGHTS TO YOUR TROG TRAX
TRAILER RECEIVER HITCH	PULL ONE OF OUR TRAILERS THAT MATCHES YOUR TRIKE
LIL'DUECE TRAILER	ADD 4 TIMES MORE STORAGE IN A SLEEK PACKAGE
ELECTRIC REVERSE*	EASILY BACK YOUR TRIKE UP AND GET ON THE ROAD
TRIKE COVER	PROTECT YOUR TRIKE
MOTOR TRIKE LUGGAGE BAG	LUGGAGE THAT MATCHES YOUR TRIKE
PARKING BRAKE	KNOW YOUR TRIKE ISN'T GOING TO ROLL AWAY!
CUSTOM PAINT	GET THE LOOK YOU WANT THAT NO ONE ELSE HAS
LED TAIL LIGHT UPGRADE	UPGRADE AND CUSTOMIZE YOUR TRIKE

* Not Available for GTX-1200

Visit WWW.MOTORTRIKE.COM or contact your local Motor Trike dealer for more details.

RECEIVER HITCH & DRAW BAR (IF EQUIPPED)

Proper installation of the draw bar into the receiver hitch is critical for your safety while towing a trailer. There is a bolt located on the bottom of the draw bar receiver tube that eliminates the draw bar from rattling. Use a 9/16" wrench when adjusting this bolt. It is necessary to remove this bolt in order to remove the draw bar. **Warning, this bolt is not intended to retain the drawbar when towing a trailer. The draw bar pin and safety pin must be installed.** Refer to Figure 5 and Figure 6 below.

In order to properly install the draw bar:

- Loosen the bolt located on the bottom of the receiver tube.
- Slide the draw bar into the receiver tube.
- Insert the draw bar pin through the receiver tube and the hole in the draw bar.
- Clip the safety pin into the groove in the draw bar pin.
- Tighten the bolt supplied under the receiver tube against the draw bar to prevent it from rattling.

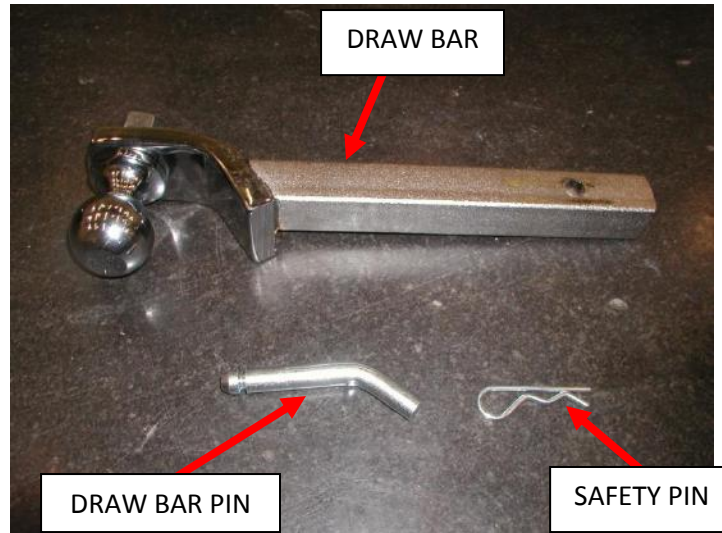


Figure 5: Draw Bar Components

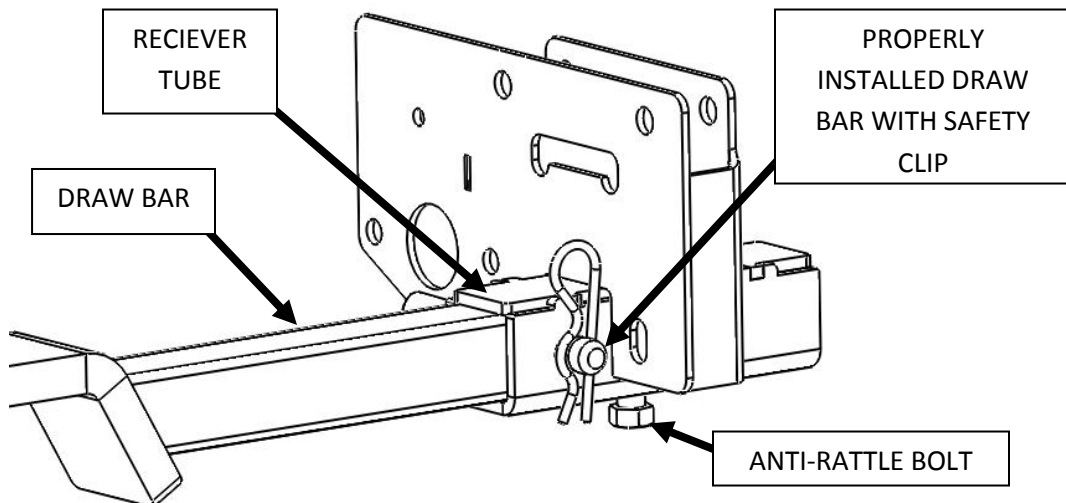


Figure 6: Properly Installed Draw Bar Safety Pin

ELECTRIC REVERSE (IF EQUIPPED)

If used within the recommendations below, the electric reverse will meet all of your expectations. Before reversing, always check that the path behind the trike is clear and announce that you are backing up to anyone nearby. Be sure to follow these guidelines will using your reverse:

- The electric reverse should not be operated longer than 15 seconds at a time.
- The bike should be driven several miles in between reverse uses to allow the battery to fully charge. Use the motorcycle's voltmeter as a guide.
- Do not stall the reverse for more than 3 seconds. If you encounter a hill or curb that cannot be climbed, remove as much weight as possible and try again. If the reverse still does not climb the hill, you may be asking it do something beyond its capability. Do not make further repeated attempts.
- Always operate the reverse while sitting on the driver's seat with both feet on the floor boards and both hands on the handlebars.

Extended use and limited charging can and will lead to electric reverse and battery damage. Motor Trike is not responsible for damage that is caused by exceeding the recommended duration or frequency of use.

The electric reverse will not perform well if the motorcycle's battery is in poor condition or if the battery doesn't have a sufficient charge.

HOW TO USE THE ELECTRIC REVERSE:

1. Turn the ignition on and start the bike. Never use the reverse when the bike is not running.
2. Put the bike in neutral.
3. Turn the activation switch on and look for the red indicator light on the switch to illuminate. See switch location in Figure 7. NOTE: With the activation switch on and the neutral light on, the function of your horn button and start button has been changed to operate the reverse.

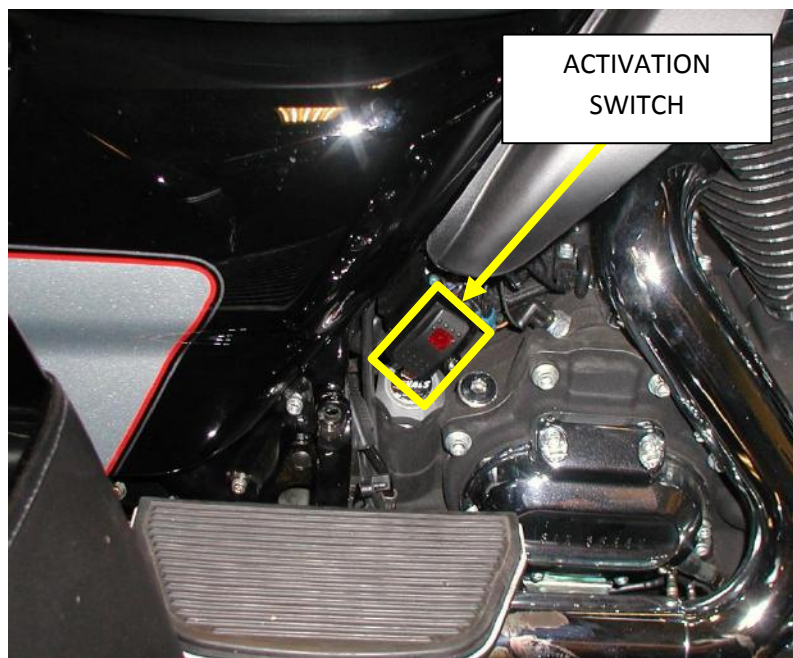


Figure 7: Activation Switch Location. View of Right Side of Bike

4. Press and hold the horn button. The horn should not sound.
5. Check that there is a clear path behind you. And announce that you are backing up to anyone nearby.
6. Press the start button to back up. **Warning: Always check that the bike is in neutral, the activation switch is illuminated, and press and hold the horn button before pressing the start button.** If the horn sounds, do not press the start button. This could cause damage to your motorcycles starting system.
7. Disable the reverse by switching the activation switch off. The function of your horn and start buttons are returned to normal. The red indicator light on the activation switch should be off.

Repeated use without charging time, stalling the reverse for too long or other abuse will cause the integrated circuit breaker(s) to trip. They are located under the seat and must be manually reset for the reverse to function again. **Warning: The breakers will not protect the reverse against all forms of abuse. Be sure to follow the guidelines outlined in this manual. If the breakers flip, the reverse is being used far and above its intended use. Repeated operation of this nature will void the warranty for the electric reverse system.** See Figure 8 for instructions on resetting the breaker(s). If you have style A there are two breakers. If you have style B there is only one breaker.

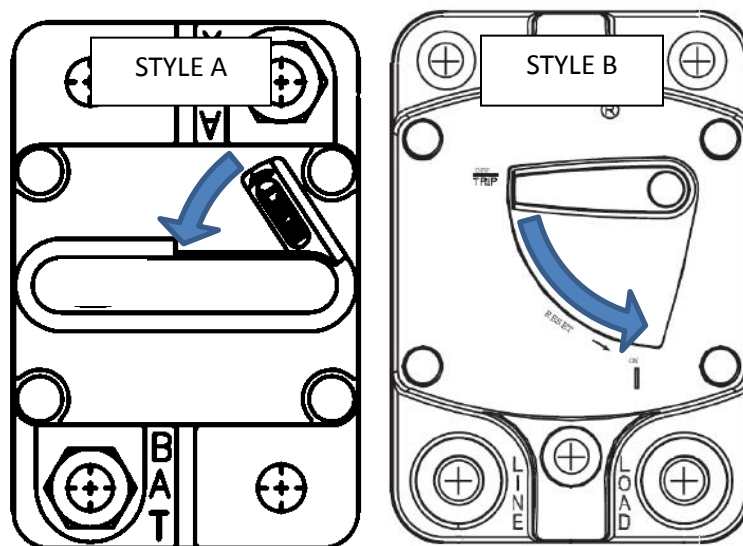


Figure 8: Resetting the Reverse Breaker(s)

MAINTENANCE

If your vehicle requires professional services, Motor Trike has an extensive dealer network with specially trained technicians capable of servicing or repairing your vehicle. To locate the authorized Motor Trike dealer nearest you, go to the Motor Trike web site (WWW.MOTORTRIKE.COM) and access the Dealer Locator link. To help ensure your vehicle is serviced at the proper intervals, we have included a maintenance schedule found below in Table 7.

Table 7: Maintenance Schedule

COMPONENT	FREQUENCY (Miles)				
	DAILY	3,000	6,000	12,000	100,000
Tire Pressure	X				
Wheels and Tires		X			
Air Suspension Pressure	X				
Lighting	X				
Belt Tension		X			
Brake Fluid		X			
Brake Rotors/ Pads			X		
CV Boots			X		
Suspension Alignment				X	
Electric Reverse*		X			

X: Inspect, Adjust, Lubricate/Replace if necessary
R: Replace
L: Lubricate using recommended lubricant
 * If Equipped, Not Available for GTX-1200

WHEELS AND TIRES

Having properly inflated tires is essential to a comfortable and safe ride. The tire pressures on your unit should be checked before each use, this includes both the front and rear tires. Motor Trike recommends 24 PSI (166 KPa) for the rear tires. Follow the front tire air pressure recommendations provided by the motorcycle manufacturer. Improper tire inflation can result in a drastic change in handling characteristics including but not limited to head shake, vibration, increased body roll, and a stiff ride. Improper tire inflation can also lead to a tire blow out. Check your tire pressure before you go on every ride.

Improper tire and wheel balancing can result in vibrations at any speeds. To prolong the life of your tires, it is suggested to have the tires and wheels balanced every 12,000 miles. Tire maintenance and replacement are vital to your vehicle’s performance. If you are experiencing uneven or improper tire wear, the alignment needs to be checked at your local Motor Trike dealer. To ensure safety, performance, and reliability, Motor Trike does NOT recommend changing the tire or wheel sizes. The rear lug nuts should be torqued to 85 ft-lbs every 3,000 miles.

AIR SUSPENSION PRESSURE

Be sure to check that your suspension air pressure is within the recommended range before and during every ride.



LIGHTING

Check that all lights are working properly before you ride your trike. This includes the brake lights, head lights, turn signals, and marker lights.

BELT TENSION

Belt tension should be checked every 3,000 miles. The belt tension should be set to the factory specifications provided in the motorcycle owner's manual.

DIFFERENTIAL GREASE

The differential lubrication is maintenance free. It does not require replacement at any interval.

CV BOOTS

The CV boots should be cleaned and checked at 6,000 mile intervals. Clean the CV boots by wiping them down with a rag; do not use any chemicals. Thoroughly inspect the boots for cracks, tears, or holes which could allow contaminants to damage the CV joints. If you do encounter any damage to the CV boots, contact your local Motor Trike dealer and have it replaced as soon as possible. Prolonged use of the vehicle with a damaged CV boot will cause damage to the CV joint and surrounding components.

SUSPENSION ALIGNMENT

In order to increase the life of the tires and to ensure proper ride and handling characteristics, the rear suspension alignment should be checked every 12,000 miles by an authorized Motor Trike dealer. If you notice that the tires are wearing prematurely or in an unusual fashion, have the alignment checked before the 12,000 mile increment.

ELECTRICAL

The trike kit wire harness, which powers and controls all of the electrical items on the trike kit, is connected to the battery under the seat. If you experience an electrical problem with any of the trike electrical systems check the in-line 15 amp fuse located on the wire running to the battery. **DO NOT REPLACE THE FUSE WITH ONE OF HIGHER VALUE.** If you replace the fuse and it blows again please contact your local Motor Trike dealer.

ELECTRIC REVERSE

- Lubricate the teeth on the reverse gears every time you change your motorcycle's engine oil. The reverse motor is located at the rear of the vehicle under the trunk floor. Use a motorcycle chain lubricant.
- Check the battery connections every time you change your motorcycle's engine oil.

- Check that all reverse wiring is properly secured every time you change your motorcycle's engine oil. **Warning: All large red cables have a constant 12 volts.**
- Follow the battery maintenance plan recommended by the manufacturer of your battery.

WARRANTY

Your Motor Trike, Inc. trike kit carries a 3-year/ 60,000 mile warranty. The start date of warranty coverage will be determined by the date on the warranty card that is turned in by the customer or dealer upon purchasing the unit.

If equipped, the electric reverse is covered by a 1-year warranty.

Any modification or changes to the Motor Trike kit, failure to follow the guidelines noted above, and/or improper maintenance will void all warranties. Misuse, abuse, accidents, unreasonable use, or Acts of God will not be covered under warranty. Normal wear items are not covered under warranty.

THANK YOU

Thank you for purchasing our trike conversion. We hope you have many safe, comfortable riding miles on our product. We invite you, in your travels, to stop by our manufacturing plant in Troup, Texas, for a tour and to meet the people who designed and manufactured your Motor Trike. We believe you will be impressed by what you witness and the people you will meet.

Again, thank you for your business and we look forward to meeting you in the future.